

1- Layout

Design 1 received:



Comments:

No:

- Signtrade Logo with 'glow'
- Business card style & product images
- Alliances Tab
- Webmail login button
- Color Theme

Yes:

- Virtual Tour button
- Subscribe Newsletter
- Product / Get a Quote tabs

Design 2 received:



Comments:

No:

- Email & Tel in header (Should be Home/Email/Sitemap Icon Only)
- 'S' style from old website
- Sub pages font/color
- Hardware & 'S' Section changed to Head office image
- Hardware and Supplies tab to be removed from Home Page

Yes:

- Color Theme works but should be a bit more vibrant
- Newsletter tab is fine but should be right aligned
- Product / Get a Quote tabs to be placed
- News & Events tab is good. News option should have continuous scrolling.
- Social media and Copyright detail - Footer looks fine. But icons placement to change.

Final Design Options:

Part 1 :- Header

- Use Grey and Red theme but make more vibrant with effects and gradations.
- 'Sign equipment and supplies' to be realigned.
- Instead of Email & Tel, have 3 icons for 'Home, Contact (Email) and Sitemap (optional)'
- On right of website have tab for following.
(Signtrade International) Shows in tab. (Other suggestions ?)



Shows in Tab: Signtrade International

Others: In drop down menu.

Signtrade - Bahrain

Signtrade - Kuwait

Signtrade - KSA

Signtrade - Nairobi

Signtrade - Oman

Signtrade - Pakistan

Signtrade - Qatar

Signtrade - Sudan

Signtrade - UAE

When Click on Any menu option. create homepage aliases with name in front.

For instance click on Oman and we address changes from->

www.signtradeinternational.com -> www.oman.signtradeinternational.com

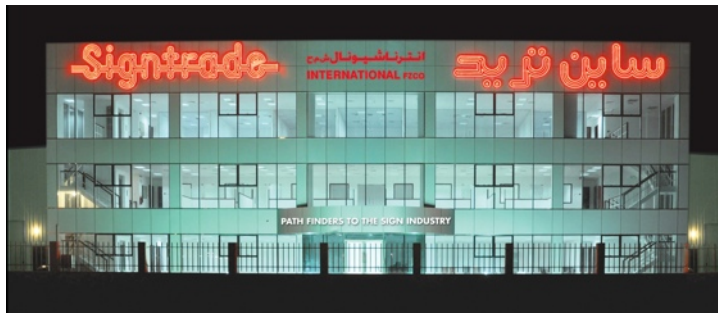
Content will remain same.

Part 2 :- Intro Page

The Main image on the page - JAFZA Head office. To add effect, you can change the day image to night or blend. Or you can try with these 2 images first and if they don't work well then suggest how many images you need for the smooth gradation.

These images are large files sent via separate email. Or DropBox it.





Option: As the intro page should be simple & the homepage is full of tabs, I suggest you have a separate intro page (flash enabled)

Intro Page:

The same header and footer is used.

Body - Different.

Concept:

World map - (grey with red highlighted areas)

The 3 lines from the Signtrade logo can wrap around the map / globe then screen focuses on the highlighted areas. Highlighted area are Africa and Asia.



Screen zooms into Africa :

zooms further into map with 'Nairobi and Sudan' highlighted.

zooms further in and 'Signtrade Nairobi image' showed with 'kens burn effect'

Screen zooms into Asia :

zooms further into map with 'Pakistan' highlighted.

zooms further in and 'Signtrade Pakistan image' showed with 'kens burn effect'

Screen zooms into Middle East :

zooms further into map with 'all Middle East branches' highlighted.

Screen moves towards KSA

shows KSA branches images: Jeddah, Medina, Riyadh, Dammam

Screen moves towards Oman

Highlights 'Muscat'

shows 'Signtrade -Muscat' 1 image

Screen moves towards Qatar
Highlights 'Doha'
shows 'Signtrade -Doha' 1 image

Screen moves towards Bahrain
Highlights 'Bahrain'
shows 'Signtrade - Bahrain' 1 image

Screen moves towards Kuwait
Highlights 'Kuwait'

Screen moves towards UAE
Highlights 'Abu Dhabi, Dubai, Sharjah, Ajman, RAK, Fujairah'
shows 'Signtrade - branch' images
Highlights 'JAFZA'
shows 'Signtrade - Jafza Image'

Jafza images zooms out and open into Homepage.

*** You can discuss this further. We could either just do the 3 images 'Nairobi, Pakistan and Jafza and just highlight all branches in the map' The duration of this animation is short and the last Jafza image should easily transform the screen into the Homepage.

Karachi



Nairobi



Part 2 :- Home Page

Please read the comments on the Homepages provides earlier. Some segments are good and some need to be changed.

The 'header' with Signtrade logo, Website Pull down menu and 3 icons' & virtual tour... remains same.

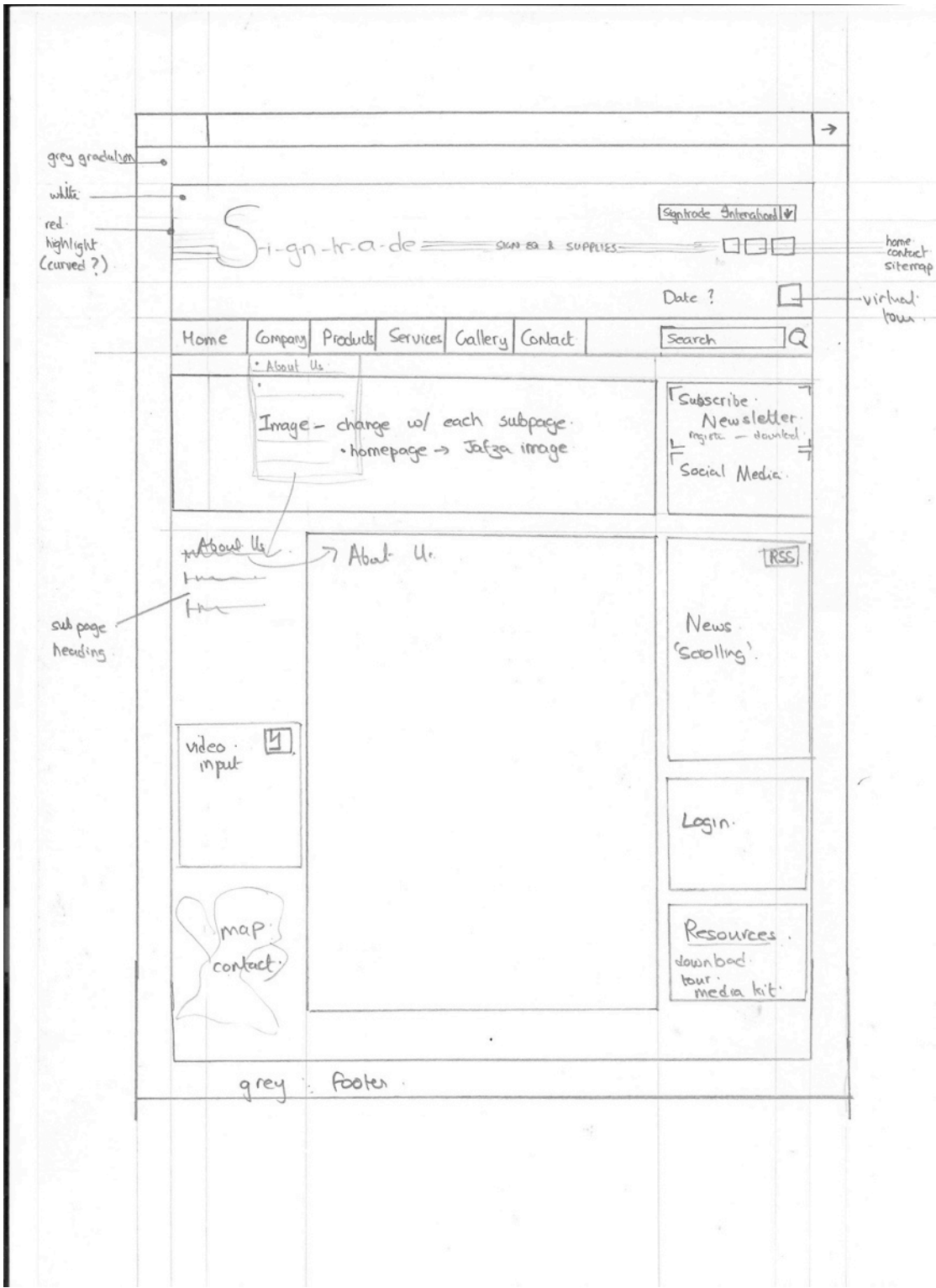
Second tab would contain : Subpages (Left aligned) and Search Option (right aligned). The grey to red for the sub pages label looks good but the tab needs to be more visible. You could try making it red. Or if it looks to flash, change contrast ?

Home
Company
Products
Services
Gallery
Contact

All the (sub pages links appear on the left side. The page opens up in the center and the Right column has few tabs that remain constant).

Below is an overall homepage layout. If you could redesign using the layout below, mostly using the tabs already created.

We can move into subpages and details from there. In the News letter tab, please give option for Registration with company.



grey gradient

white

red highlight (curved?)

sub page heading

grey footer

Sign-trade International

Sign-trade

Signs & Supplies

Date ?

Home Company Products Services Gallery Contact

Search

About Us

Image - change w/ each subpage
homepage -> Jafza image

Subscribe Newsletter
mp3 etc - download
Social Media

About Us

About Us

RSS

News Scrolling

video input

Login

map contact

Resources
download
tour
media kit

home contact sitemap

virtual tour